

The TrailerCam Advantage

EarthCam's Triple Play - Camera side, server side and client side software all combine to deliver superior reliability that has been proven since 1996.

Advanced Network Camera Technology - www.earthcam.net/technology

EarthCam Mobile TrailerCam
Wireless & Solar Powered



M2M (Machine to Machine)

EarthCam's exclusive "Machine to Machine Self-Healing Camera Technology" checks each TrailerCam in our managed systems up to 288 times daily and automatically issues corrections to maintain a reliable connection to your trailer.

Your PC



EarthCam Secure
Network Operations Center

Control Center 7 Software - www.earthcam.net/software



- Remotely Control from Anywhere
- High Resolution, Live Video & Archiving
- Record & Playback Time-lapses
- Password-protected
- Multi-level User Accounts
- Weather Documentation & 48-hour Forecast
- 3G/4G Wireless & Solar Monitoring
- Multi-function Interactive Calendar
- Google Earth Map Integration
- Comparison Tools and Image Sharing
- Document & Milestone Posting
- Autogenerated Progress Reports
- Unlimited Online Support and Training

Control your cameras remotely from
your desktop or mobile device



ATLANTA
BOSTON
CHICAGO

COLUMBUS
DUBAI
DUBLIN

HONG KONG
HOUSTON
LAS VEGAS

LONDON
LOS ANGELES
MOSCOW

NEW ORLEANS
NEW YORK
QATAR

SAN FRANCISCO
SEATTLE
WASHINGTON DC

1-800-EARTHCAM
www.earthcam.net

The TrailerCam Advantage

Secure Software & Professional Managed Services



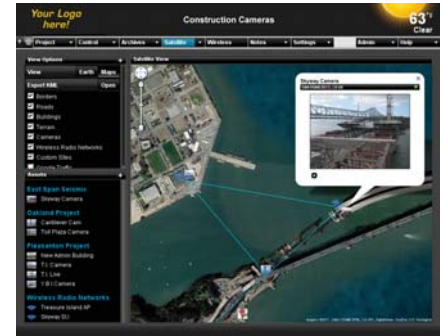
Project Dashboard

View important information about your project, power & bandwidth at-a-glance



Live Video & Archiving

Control your cameras remotely from your desktop or mobile device



Google Map Navigation

Take full advantage of direct access to integrated Google map features



Automated Progress Reports

Record and share project notes, photos, videos and documents



Image Comparison

Compare stages of construction, add notes and share with colleagues



Data Dashboard

Check essential system performance information in one visually dynamic area



Weather Documentation

Weather conditions for project duration, daily 48-hour forecast & rain day counts



Solar and Fuel Cell Data

Battery, solar and fuel cell performance with selectable alarms and alerts



Wireless Data

3G/4G cellular, Wi-Fi and microwave monitoring, signal strength & transmission



Software Training & IT Tools

Unlimited online support, training and detailed real-time usage reports



ITS - Digital Sign Control

Travel time analytics broadcast to DMS - update any NTCIP systems remotely



ITS - Traffic Management

Dynamic multi-lane traffic visualization - density, volume, speed data and more